

Group Statement of Service Performance Through shelter we empower



Our mission, vision and values

Mission



Vision

Our vision is a world where everyone has a decent place to live. We believe in giving whānau a hand up, not a handout. We work in partnership with whānau in need of decent and affordable housing to make positive and lasting change.

Values - Nga ūara

Demonstrate the love of Jesus Christ

Kua pūmau ki te aroha o te Karaiti

Focus on Shelter

Ka hanga he whakaruruhau

Advocacy for affordable housing

Ka mahitahi kia whai kāinga

Promote dignity and hope

Mana ake

Support sustainable and transformational development

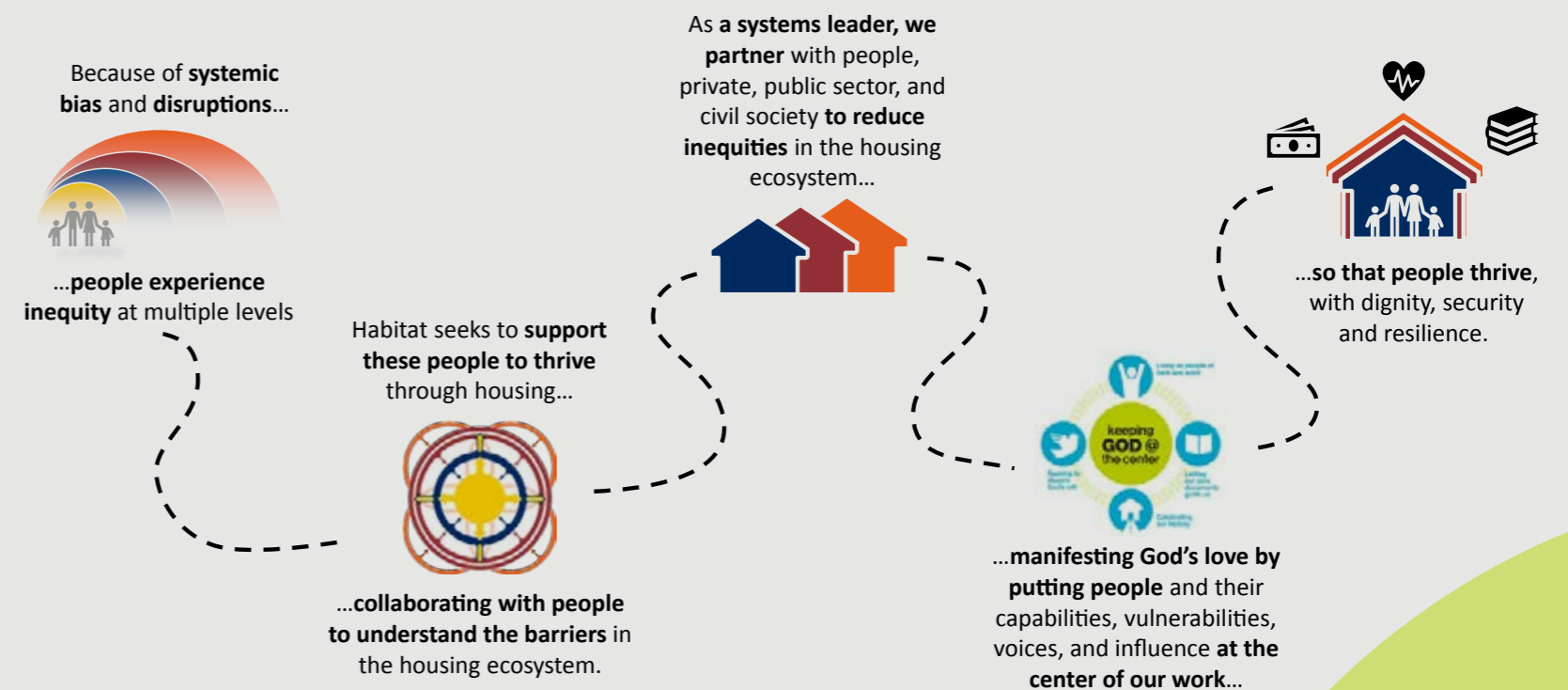
Kia tautoko i te whanaketanga

Through shelter, Habitat works to eliminate barriers to a better, healthier, and more financially stable life. Globally, Habitat has helped more than 13.2 million people obtain safe and decent housing, along with the strength, stability and self-reliance they need to build a better future for themselves and for their families. In New Zealand, we support thousands of whānau across the country each year, through programmes such as Progressive Home Ownership, Home Repair, Healthy Home Initiatives, and more.

Habitat's Theory of Change

The International Theory of Change is designed to reflect Habitat's vision and mission. It provides high-level direction that unifies our work and drives us towards a greater long-term contribution, and deeper impact in the communities we serve. The Theory of Change evolves our understanding of how to address inadequate housing worldwide, specifically by:

- Placing **people at the centre of all our work** and highlighting their role in defining and realising the ways they will improve their lives.
- Compelling us to **apply a housing ecosystem lens** to our work, helping us to understand the factors that support or hamper people on their housing journey.
- Asking us to start our work by **examining the root causes of inadequate housing**, from the power imbalances caused by systemic bias to disruptive trends and events.
- Helping us to link our specific programmes with the larger **outcomes and impacts** we envision.



Our overseas impact

5

Houses repaired
480 in 2020-21

4

New houses built
36 in 2020-21

9

Communities trained in Safe Shelter Awareness for 206 participants
44 communities for 894 participants in 2020-21

176

Vocational trainees
1325 in 2020-21

5

Communities trained in specific building techniques on how to improve cyclone resistance shelter for 96 participants.
44 communities for 724 participants in 2020-21

5

Communities Evacuation Centre projects sponsored
5 in 2020-21

\$1.3 Million

to help with community projects across Tonga, Samoa and Fiji
\$2.79million in 2020-21



Work in the Pacific region was considerably slowed down due to the impact of Covid-19 and accompanying lockdowns during the year ended June 2022.

Our national impact

81

Houses repaired

1,456 in 2020-21**

79,517

Volunteer hours

108,806 in 2020-21

10

New homes added to our PHO* programme

10 in 2020-21

82

Families in our PHO* programme

95 in 2020-21

23

PHO* families settled the purchase of their home

28 in 2020-21

117

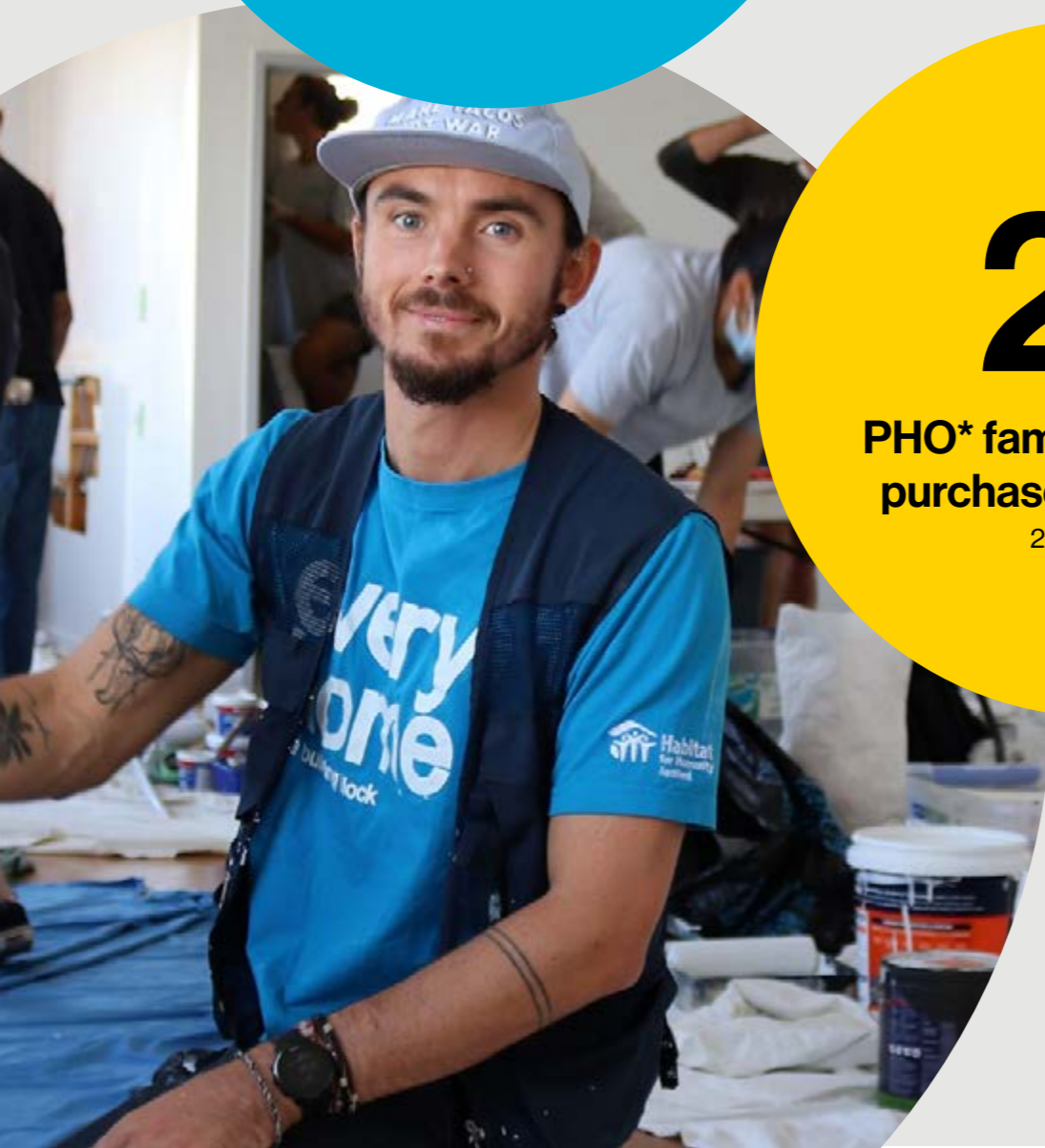
Families in social rental housing

119 in 2020-21

5,125

Curtains provided

4,066 in 2020-21



*Progressive Home Ownership

**This variance is due to a change in the way we will calculate this figure going forward



Let's continue to build impact together

Postal Address: Habitat for Humanity New Zealand National Office:
PO Box 112-387 644 Great South Road
Auckland 1642 Ellerslie, Auckland 1051

